

PRIVATE SCHOOL GUIDE

FROM THE PUBLISHERS OF PHILADELPHIA MAGAZINE



PRIVATE EDUCATION 101

PHILADELPHIA-AREA SCHOOLS RISE TO THE CHALLENGE

With small class sizes, the latest technology and tight-knit communities, the appeal of a private school education has never been more clear.

THE FINAL MONTHS OF THE 2020 SCHOOL YEAR challenged educators like never before. In this year's Private School Guide, you'll hear how local schools excelled in educating and caring for students virtually amid the coronavirus pandemic and get pro tips for choosing the right school without in-person tours. You'll also discover some of the region's most innovative and exciting schools for your child—whether they need extra academic challenges, an inclusive community or support to thrive with their learning differences.

ACADEMICS

THE RESULTS ARE IN

Faced with an unprecedented test, local private schools have received high marks on remote learning.

This past spring, students, teachers, parents and administrators from the Greater Philadelphia region all partook in one giant learning experiment—and not the kind that takes place in a science lab. Shifting the entire private school experience to a virtual one took resilience, ingenuity and a whole lot of patience, but after that trial by fire, campuses now stand more knowledgeable than ever about maximizing the advantages of online classrooms.

One of the first ways schools pivoted in remote learning was with the class schedule. While longer periods are ideal for in-person, experiential learning, it doesn't always work for virtual education. "We learned that 80 minutes is just too long to expect a student to stay on a computer," says Holly Victor, an assistant director at Solebury School in New Hope, PA. The school responded by shortening classes to 50 minutes, with the other 30 minutes reserved for flex time. "Flex time allows students to get their homework done, make an appointment with a teacher or just take a break from screen time."

Other schools adapted by flipping how students learn—having them review materials first, followed by in-class instruction with the teacher. "Sometimes, it can be easy to default to having information spoon-fed to you, but in a virtual classroom, you need to own it more," says Daniel Ranalli, an assistant principal at Saint Joseph's Preparatory School in Philadelphia. "That is a great skill to have when you move on to college and beyond."

Across the board, regional private schools saw remote learning as an opportunity to give students new, outside-the-box experiences. Schools offered students everything—virtually—from professional cooking lessons to fun fitness classes to field trips around the world. "In pre-COVID times, it would have been impossible to pop over to Rome for a class period to talk to classical experts," says Margaret Smith, a curriculum director at Friends Select School in Philadelphia.

Although not without its challenges, this particular learning experiment has resulted in some undeniable successes for private schools—emphasizing the advantages that come from a small class sizes and advanced technologies. "It gave us the impetus to incorporate other approaches to teaching that we might not have tried," Ranalli explains. "There are aspects of virtual learning that can be utilized when we return to whatever becomes normal."



ADMISSIONS

Making the Grade

This fall, the admission process will go online for many private schools. Tour the campus, ask questions and then ace the applications—all from the comfort of your living room.

VIRTUAL TOURS

► Log on for online open houses to "tour" campus and get a feel for the community without leaving home.

ZOOM CLASSES

► Sample remote coursework by attending a class on the computer for a preview of what the learning experience will feel like.



ONLINE PANELS

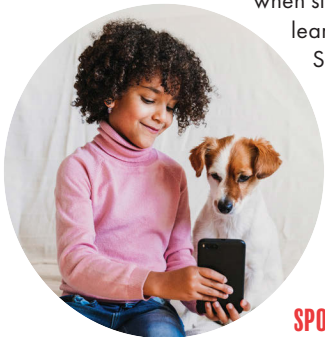
► Hear from current students, faculty and parents during these remote sessions. Then ask away with any questions about the application process.

EXTRACURRICULARS

After-school Special

Even after the final bell rings, the school experience shouldn't end. "Students really look forward to activities," Ranalli says. "It's part of their identity and important as a release to equalize themselves." Shifting to online extracurriculars inspired both faculty and students to dream up new virtual gatherings that brought everyone together. "Activities planned and led by the students have been far more successful," Victor adds. "Not only do they tend to be more relatable for their peers, but it also inspires other kids to develop activities, which then creates more activities, more buy-in and more community." These virtual extracurriculars prove you don't need a building to build belonging.

SPIRIT: A strong sense of community is integral to private schools—especially when students were learning virtually. Schools and students took to social media for silly competitions and fun games to keep school spirit alive.



SPORTS: Athletics weren't entirely benched when school went online. Teachers and coaches encourage team building through virtual workouts and competitions—sometimes against other schools.

SMARTS: Academic extracurriculars were easy to continue digitally, from morning broadcasts hosted on Instagram to chess matches on the internet.

ARTS: Virtual theater productions and band performances, digital art displays and Zoom cooking clubs are just a few of the ways students were able to stay engaged in their arts and culture after-school programs.





READY TO BEGIN?

Explore the many options the Philadelphia region has to offer your family. ➔

STRATFORD FRIENDS SCHOOL

— guiding unique learners —

K	1	2	3	4
5	6	7	8	9

grades served




average class size

- Orton-Gillingham Approach
- IMSLEC Accredited Program
- Occupational Therapy
- Speech & Language Therapy
- Social Pragmatics



Stratford Friends School provides nurturing, expert instruction for students who have language-based learning differences.



quaker values



Rolling Admissions — Schedule a Private Tour Today!
 610.886.4337 | stratfordfriends.org | Newtown Square, PA



THE CREFELD SCHOOL

8836 Crefeld Street, Philadelphia

A gender inclusive school for students in grades 7 through 12, The Crefeld School's mission is to graduate self-aware, empathetic, lifelong learners who possess an appreciation for diverse perspectives, their role in society, and their ability to act as agents of change. Located in Chestnut Hill, Philadelphia, Crefeld provides an intentionally different college preparatory program to help students become their best selves.

Crefeld is a different kind of school where nobody is the same and everybody can succeed. Everyone has their own unique strengths that add value to the community. Small class sizes, close relationships with teachers and peers from all backgrounds, and responsive academic and emotional support creates a challenging, creative and flexible learning environment tailored to each student's strengths.

Students from varied backgrounds and walks of life comes to Crefeld looking for: a progressive, student-centered school; a safe school that values each student; extra learning or emotional support in a college-prep environment; and the opportunity to take ownership of their learning.

→ 215-242-5545, CREFELD.ORG

OPEN HOUSES

Sept. 24th,
Oct. 22nd,
Dec. 12th,
Feb. 19th &
April 17th.
Visit [crefeld.org/openhouse](https://www.crefeld.org/openhouse) for updates.



FRIENDS SELECT SCHOOL

1651 Benjamin Franklin Parkway, Philadelphia

Friends Select School is the only pre-K to grade 12 Quaker school in Center City Philadelphia. Located on the Benjamin Franklin Parkway, Friends Select sits at the intersection of commerce and culture. The school utilizes the city as a dynamic living classroom, enhancing education through unparalleled access to local resources, including universities, science institutes, arts and cultural organizations, social service agencies, businesses and government offices.

A Friends Select education is notable for its continuity, which links curriculum from year to year, and for its strong focus on research, writing, and oral presentation. Such learning opportunities, combined with a foundation of Quaker values, are practiced in an atmosphere of integrity and warmth. The result is a world-class education in a world-class city that is deeply rooted in student advocacy and active citizenship. Friends Select's campus includes a rooftop field; 25-yard swimming pool; full gymnasium and weight room; and playground exclusively for students in lower school and the after school program. Students also have easy access to nearby athletic facilities including Boathouse Row and reserved fields in Fairmount Park.

→ 215-561-5900, FRIENDS-SELECT.ORG

- 📍 **OPEN HOUSES**
- Pre-K & K: Sept. 22nd (Virtual)
- Pre-K–Grade 12: Oct. 10th (Virtual) & April 13 (TBD)
- Pre-K–Grade 4: Nov. 10th (Virtual)
- Grades 5–12: Nov. 11th (Virtual)



GERMANTOWN ACADEMY

340 Morris Road, Fort Washington, PA

Germantown Academy fosters a genuine love of learning and creates an exceptional academic, artistic, athletic and social experience for students. From their discussion-based Harkness Tables in the upper school to their dynamic lower school Tinker Lab and within the incredible all-school Beard Center for Innovation, Germantown Academy expertly pairs the best from their 260 years of history and tradition with the best in innovation and 21st-century learning skills. Their Kids Teaching Kids science program, college-based Writing Center, award-winning Belfry Club (the nation's oldest continuously run high-school drama club), school-wide community service program, and robust 6-12 athletics program that competes in the Inter-Academic Athletics League are just a few examples of how.

At Germantown Academy, students are valued for their own unique gifts, parents are committed partners, and dedicated, talented teachers care deeply about helping each student succeed. Their mission statement—to inspire students to be independent in thought, confident in expression, compassionate in spirit, collaborative in action and honorable in deed—is alive in their classrooms, science labs, stages and fields every day, and is their promise to provide students with a truly extraordinary education.

→ 215-646-3300, GERMANTOWNACADEMY.NET

OPEN HOUSES
Visit the school's website for the latest information on admissions events.



MALVERN PREPARATORY SCHOOL

418 South Warren Avenue, Malvern, PA

Malvern Preparatory School is an independent, Augustinian school for young men in grades six through 12. Their innovative approach to teaching and learning engages and inspires today's young men to become tomorrow's leaders through inquisitive thinking, character development and lifelong friendships. On Malvern's state-of-the-art college-like campus, students enjoy an extraordinary independent school experience that not only prepares them to excel at the next level, but to lead meaningful lives grounded in Augustinian values.

→ 484-326-3547, MALVERNPREP.ORG

OPEN HOUSE
 Oct. 17th. Visit malvernprep.org for the latest updates on if it will be held virtually or in person.



ACADEMY OF NOTRE DAME DE NAMUR

560 Sproul Road, Villanova, PA

Successful students. Accomplished graduates. Compassionate leaders. Since Notre Dame's founding in 1856, the world has changed dramatically, but the Academy's commitment to teaching young women in grades 6 through 12 "what they need to know for life" remains unchanged. With a bold strategic vision, a proven and comprehensive online teaching/learning protocol, and the state-of-the-art Riley Center for STEM Education, Notre Dame is inspiring the next generation of graduates to take their place as confident leaders in a global society. Through their lives and actions, and guided by the legacy of the Sisters of Notre Dame de Namur, students and graduates celebrate the goodness of God. How will Notre Dame inspire your daughter?

→ 610-971-0498, NDAPA.ORG



[OPEN HOUSE](#)

Sept. 27th



BISHOP EUSTACE PREPARATORY SCHOOL

5552 Route 70, Pennsauken, NJ

As the only co-educational private Catholic high school in South Jersey, Eustace Prep is where young men and women find their inner strength. Their Crusaders take on college-modeled lives, managing their schedules across a 32-acre campus and consulting with faculty to reach their greatest potential.

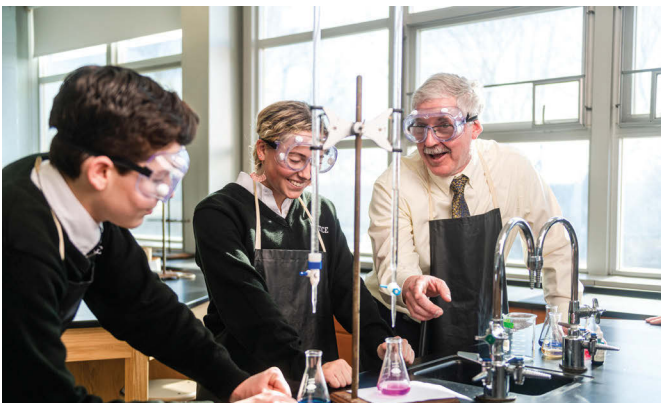
Eustace Prep gives students the resources to thrive academically, socially and spiritually—even when expectations are high. From dedicated prep time for mentoring to extended library hours, peer tutoring and elective flexibility, Crusaders are equipped for success through high school, college and beyond.

→ 856-662-2160, EUSTACE.ORG



[OPEN HOUSES](#)

[Visit eustace.org to learn more.](#)





FRIENDS' CENTRAL SCHOOL

1101 City Avenue, Wynnewood, PA

Whether on-campus, virtual or a combination of the two, Friends' Central School is committed to giving each student the opportunity to excel academically, nurture their passions, and focus on their mental and emotional health during this time of uncertainty. Exciting program additions for the 2020-2021 school year include anti-racist coursework, leadership and bias training, and learning management systems like Canvas and IXL for students. Find out how Friends Central' School goes further. Personal campus tours available. Contact admission@friendscentral.org to schedule a tour of the Lower School or City Avenue campus, just for your family.

→ 610-649-7440, FRIENDSCENTRAL.ORG



OPEN HOUSES

Virtual dates: 9 a.m. on Oct. 12th, Nov. 4th & Dec. 2nd. Visit friendscentral.org/admission for the latest info.



GEORGE SCHOOL

1690 Newtown Langhorne Road, Newtown, PA

A global school with local roots, George School is a Quaker, co-ed boarding and day high school in Newtown, PA. Convenient to New York City and Philadelphia, the school is located on a picturesque 240-acre campus of open lawns and beautiful woods.

George School is an experienced leader in education, offering the International Baccalaureate (IB) diploma program and nearly 20 Advanced Placement courses. Students are immersed in learning across science, technology, engineering, the arts and mathematics in a rigorous yet personalized curriculum.

George School graduates become confident and capable leaders rooted in self-awareness, self-sufficiency, and the ability to listen deeply to others.

→ 215-579-6547, GEORGESCHOOL.ORG



OPEN HOUSE

Visit georgeschool.org/admission for the latest info.



GWYNEDD MERCY ACADEMY HIGH SCHOOL

1345 Sumneytown Pike, PO Box 902,
Gwynedd Valley, PA

Unstoppable women start at Gwynedd Mercy Academy High School. Steeped in 160 years of legacy and tradition, whether on campus or in virtual environments, Gwynedd educates, inspires, and empowers young women to be merciful in spirit, innovative in thought and courageous in leadership. Always keeping an eye to the future, Gwynedd Mercy is steadfast in its commitment to provide an inclusive, immersive educational experience to cultivate exceptional female leaders who are equipped with global competencies. Their student-centered academic schedule provides students both focus and flexibility, while the school culture supports wellness and wellbeing of oneself and of others.

→ 215-646-8815, GMAHS.ORG



[OPEN HOUSES](#)

Visit gmahs.org/admissions/important-dates to learn more or email admissionsdept@gmahs.org to schedule a tour.



JACK M. BARRACK HEBREW ACADEMY

272 South Bryn Mawr Avenue, Bryn Mawr, PA

Jack M. Barrack Hebrew Academy's challenging, inspiring education integrates humanities, sciences and Jewish studies in a nurturing setting. They're committed to building a diverse, inclusive community that values and embraces all students. As the nation's first pluralistic Jewish secondary day school, Barrack combines a rigorous college preparatory curriculum with the teaching of essential Jewish and American values and texts. Barrack graduates value diversity; celebrate the richness of Judaism's language, culture and history; and have a strong connection to Israel. Barrack shows students how questions are as important as answers along the path to intellectual, creative and spiritual growth.

→ 215-922-2350, JBHA.ORG



[OPEN HOUSES](#)

Visit jbha.org/admissions to learn more.



MOUNT SAINT JOSEPH ACADEMY

120 West Wissahickon Avenue, Flourtown, PA

Mount Saint Joseph Academy (the Mount) is a private Catholic high school for young women. The Mount fosters leadership, compassion and courage through intellectual exploration, innovation and creativity. Students learn the importance of collaboration through athletics, the arts, extracurricular activities and service opportunities rooted in the mission of the Sisters of Saint Joseph (the founders of the academy). You are invited to learn more about the Mount's rich legacy of academic excellence and sisterhood by attending an open house, visiting their website or contacting the enrollment office.

→ 215-233-3177, MSJACAD.ORG



[OPEN HOUSE](#)

Oct. 4th. Visit msjacad.org/openhouse to learn more.



NAZARETH ACADEMY HIGH SCHOOL

4001 Grant Avenue, Philadelphia

The only private, Catholic high school for girls in Philadelphia, Nazareth Academy High School challenges its students with a rigorous college preparatory curriculum that is deeply rooted in the teachings of the Sisters of the Holy Family of Nazareth. Located in beautiful suburban Northeast Philadelphia and boasting an 8-to-1 student-to-teacher ratio, Nazareth Academy is a close-knit sisterhood of young women who achieve excellence in the classroom and strive to be virtuous leaders in the community.

→ 215-637-7676, NAZARETHACADEMYHS.ORG



[OPEN HOUSE](#)

Oct. 17th. Visit nazarethacademyhs.org/admissions for the latest info.



THE SHIPLEY SCHOOL

814 Yarrow Street, Bryn Mawr, PA

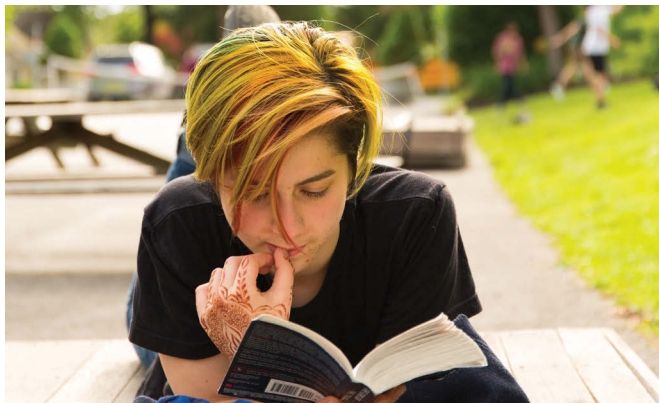
The Shipley School, a pre-K through grade 12 coeducational day school in Bryn Mawr, inspires and prepares students to make a powerful and positive impact in the world. Their goal of maximizing students' potential begins with a focus on well-being and providing a wide breadth of opportunities for young people to discover new passions. Shipley believes that students should find their individual path to success—there is no Shipley mold. Their academic program is challenging and broad—there are more than 50 honors and interdisciplinary courses in Upper School—and there are endless opportunities for leadership in athletics, the arts and other extracurricular activities.

→ 610-525-4300, SHIPLEYSCHOOL.ORG



[OPEN HOUSES](#)

Visit ishipley.org/phillymag to learn more.



SOLEBURY SCHOOL

6832 Phillips Mill Road, New Hope, PA

Solebury School is a co-ed, college preparatory boarding and day school for grades 9-12 located on 140 acres in beautiful Bucks County. This fall, students can look forward to a strong academic program and a rich community experience that prioritizes their safety. Solebury's plans for fall include synchronous in-person and remote classes to accommodate all comfort levels; protocols governing life in and out of the classroom to prioritize the safety of the community; and a wonderful array of in-person and online after-school activities, clubs and social events that will nurture students as they learn and grow as a community. Solebury is what school should be.

→ 215-862-5261, SOLEBURY.ORG



[OPEN HOUSES](#)

Oct. 18th, Nov. 15th & Dec. 6th





ST. JOSEPH'S PREPARATORY SCHOOL

1733 West Girard Avenue, Philadelphia

Since 1851, St. Joseph's Prep has offered an exceptional education to the best and brightest young men from across the Delaware Valley. Rooted in a tradition of Jesuit education, the Prep shapes well-educated, well-spoken, and well-rounded young men who go forward to make a difference in the world, prepared for anything that comes their way on a college campus and beyond.

St. Joseph's Prep offers your son: incomparable academic standards; a Catholic, Jesuit heritage focused on open-minded teaching, service, and character development; an immersive college-prep environment; dedicated and accomplished faculty; athletic and co-curricular excellence and tradition; and a Philadelphia campus with a unique student mix.

→ 215-978-1950, SJPREP.ORG



OPEN HOUSES

Learn more at sjprep.org/admissions/visit-us.



ST. PETER'S SCHOOL

319 Lombard Street, Philadelphia

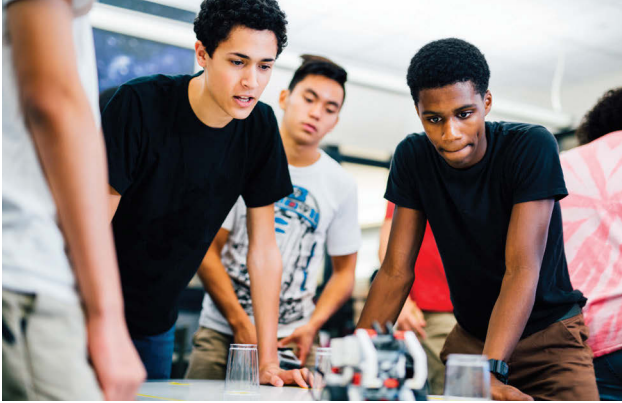
St. Peter's School is a nonsectarian, independent, co-educational school for children in preschool through eighth grade. An inclusive community of engaged learners and dedicated teachers nestled in the historic Philadelphia neighborhood of Society Hill, St. Peter's has been educating students to be generous and committed citizens of the world since 1834. St. Peter's honors the richness of childhood for students and their families; fosters a lifelong love of learning; cultivates inclusivity and compassion; instills honesty and encourages respect for one's self, one's work and the community. Character development, academic pursuit, cultural awareness, arts appreciation and self knowledge are the tenets of a St. Peter's School education.

→ 215-925-3963, ST-PETERS-SCHOOL.ORG



OPEN HOUSE

Oct. 24th. Find the latest details at st-peter-school.org/visit.



ABINGTON FRIENDS SCHOOL

575 Washington Lane, Jenkintown, PA

The world can be transformed by powerful ideas and fearless voices. Abington Friends School fosters the growth of children into informed change-makers through a dynamic academic program strengthened by Quaker values.

→ 215-886-4350, ABINGTONFRIENDS.NET



[OPEN HOUSES](#)

Virtual: Sept. 26th, Oct. 6th, Oct. 17th & Nov. 10th



BENCHMARK SCHOOL

2107 North Providence Road, Media, PA

Benchmark School is an internationally recognized leader in providing effective, individualized education for bright children in grades 1-8 who are identified as having dyslexia, ADHD or other learning differences.

→ 610-565-3741, BENCHMARKSCHOOL.ORG



[OPEN HOUSES](#)

Middle School: Oct. 1st & Nov. 5th | Lower School: Oct. 22nd & Nov. 9th



DOANE ACADEMY

350 Riverbank, Burlington, NJ

Doane Academy (est. 1837), an independent day school for students ages 3 through 12th grade, provides an innovative, rigorous and supportive program. The school develops leadership, character and integrity within each student.

→ 609-386-3500, DOANEACADEMY.ORG



[OPEN HOUSES](#)

Visit doaneacademy.org/admissions to learn more.



EPISCOPAL ACADEMY

1785 Bishop White Drive, Newtown Square, PA

The Episcopal Academy is a pre-K-grade 12, coeducational, independent day school. Founded in 1785, Episcopal challenges and nurtures mind, body and spirit and inspires boys and girls to lead lives of purpose, faith and integrity.

→ 484-424-1400, EPISCOPALACADEMY.ORG



[OPEN HOUSES](#)

Visit episcopalacademy.org/admissions to learn more.



FRIENDS SCHOOL HAVERFORD

851 Buck Lane, Haverford, PA

For 135 years, Friends School Haverford has offered an intellectually rich program for nursery through grade 8 on its beautiful campus, guided by Quaker philosophy and the tenets of progressive, constructivist education.

→ 610-642-2334, FRIENDSHAVERFORD.ORG



OPEN HOUSES

Call 610-642-0354 to schedule a virtual tour.



LAURA CONNOR PHOTOGRAPHY

GREENE TOWNE MONTESSORI SCHOOL

2121 Arch Street, Philadelphia

Greene Towne Montessori School instills in young children an understanding of learning as a personal process, a sense of agency in building self and community, and the joy of possibility.

→ 215-563-6368, GTMS.ORG



OPEN HOUSES

Visit gtms.org/admissions for more information.



HOLY CHILD SCHOOL AT ROSEMONT

1344 Montgomery Avenue Rosemont, PA

Holy Child believes happy children learn better, offering preschool-grade 8 students a dynamic curriculum in a joyful environment. Graduates enter high schools of choice, with character shaped by service, leadership and community.

→ 610-922-1010, HOLYCHILDROSEMONT.ORG



OPEN HOUSES

Visit holychildrosemont.org/admissions/virtual-admissions-hub.



MONTGOMERY SCHOOL

1141 Kimberton Road, Chester Springs, PA

An independent co-ed day school for children in pre-K-grade 8, Montgomery School believes lifelong growth is directly related to the educational foundations that are established in a child's formative years.

→ 610-827-7222, MONTGOMERYSCHOOL.ORG



OPEN HOUSES

Visit montgomeryschool.org/admissions to learn more.



THE PHILADELPHIA SCHOOL

2501 Lombard Street, Philadelphia

The Philadelphia School encourages preschool through eighth-grade students to fulfill their intellectual, social and civic potential through hands-on, inquiry-based learning in both urban and natural environments.

→ 215-545-5323, [TPSCHOOL.ORG](https://tpschoool.org)



OPEN HOUSES

Visit tpschoool.org/visit for info sessions and virtual tours.



THE WALDEN SCHOOL

901 North Providence Road, Media, PA

Whether age two or 12, Walden empowers the whole child by fostering academic excellence via unique and challenging learning programs. Preschool through grade 8 curriculums are available, including full-day kindergarten.

→ 610-892-8000, [THEWALDENSCHOOL.ORG](https://thewaldenschool.org)



OPEN HOUSES

Visit thewaldenschool.org/admissions/virtualtour.cfm to learn more.



THE TATNALL SCHOOL

1501 Barley Mill Road, Wilmington, DE

For more than 90 years, The Tatnall School has been rooted in inquiry, character, warmth and creativity. Tatnall prioritizes the balance between rigor and freedom to explore, making this an extraordinary place to grow and learn.

→ 302-998-2292, [TATNALL.ORG](https://tatnall.org)



OPEN HOUSES

Visit tatnall.org/admissions to learn more.



WALDRON MERCY ACADEMY

513 Montgomery Avenue, Merion Station, PA

Students from preschool to grade 8 experience the joy of learning at Waldron Mercy Academy, a diverse, co-ed school sponsored by the Sisters of Mercy with a robust service learning curriculum.

→ 610-664-9847, [WALDRONMERCY.ORG](https://waldronmercy.org)



OPEN HOUSES

Visit waldronmercy.org/virtual-admissions-center to learn more.

PRIVATE SCHOOL LISTINGS

DAIS

Delaware Association of Independent Schools

MSACS

Middle States Association of Colleges and Schools

NAEYC

The National Association for the Education of Young Children

NJAIS

New Jersey Association of Independent Schools

PAIS

Pennsylvania Association of Independent Schools

NCEA

National Catholic Educational Association

FCE

Friends Council on Education

MSA-CESS

Middle States Association of Colleges and Schools

ADVIS

Association of Delaware Valley Independent Schools

IMSLEC

International Multisensory Structured Language Education Council

NACAC

National Association for College Admission Counseling

TSAO

Ten Schools Admissions Organization

ABINGTON FRIENDS SCHOOL

FEATURED PROFILE

Abington, PA

215-576-3963, abingtonfriends.net

Day, coed, pre-K-grade 12

Enrollment: 550

ACCREDITATION: PAIS

ACADEMY OF NOTRE DAME DE NAMUR

FEATURED PROFILE

Villanova, PA

610-971-0498, ndapa.org

Day, girls, grades 6-12

ENROLLMENT: 559

ACCREDITATION: PAIS, MSACS

ACADEMY OF THE NEW CHURCH

Bryn Athyn, PA

267-502-2500, ancss.org/girls-school

Day/boarding, girls, grades 9-12

ENROLLMENT: 97

ACCREDITATION: MSACS

THE AGNES IRWIN SCHOOL

Rosemont, PA

610-525-8400, agnesirwin.org

Day, girls, pre-K-grade 12

ENROLLMENT: 587

ACCREDITATION: PAIS, MSACS

AIM ACADEMY

Conschohocken, PA

215-483-2461, aimpa.org

Day, co-ed, grades 1-12

ENROLLMENT: 383

ACCREDITATION: PAIS

ARCHMERE ACADEMY

Claymont, DE

302-798-6632, archmereacademy.com

Day, coed, grades 9-12

ENROLLMENT: 507

ACCREDITATION: MSACS

BENCHMARK SCHOOL

FEATURED PROFILE

Media, PA

610-565-3741, benchmarkschool.org

Day, coed, grades 1-8

ENROLLMENT: 170

ACCREDITATION: PAIS

BISHOP EUSTACE PREPARATORY SCHOOL

FEATURED PROFILE

Pennsauken, NJ

856-662-2160, eustace.org

Day, coed, grades 9-12

ENROLLMENT: 450

ACCREDITATION: MSA-CESS

CENTER SCHOOL

Abington, PA

215-657-2200, centerschoolpa.org

Day, coed, grades 1-8

ENROLLMENT: 68

ACCREDITATION: ADVIS

CHURCH FARM SCHOOL

Exton, PA

610-363-7500, gocfs.net

Day/boarding, boys, grades 9-12

ENROLLMENT: 174

ACCREDITATION: PAIS, MSACS

THE CREFELD SCHOOL

FEATURED PROFILE

Philadelphia

215-242-5545, crefeld.org

Day, coed, grades 7-12

ENROLLMENT: 100

ACCREDITATION: PAIS, MSA-CESS

DOANE ACADEMY

FEATURED PROFILE

Burlington, NJ

609-386-3500, doaneacademy.org

Day, coed, age 3-grade 12

ENROLLMENT: 240

ACCREDITATION: NJAIS, MSA-CESS

EPISCOPAL ACADEMY

FEATURED PROFILE

Newtown Square, PA

484-424-1400, episcopalacademy.org

Day, coed, pre-K-grade 12

ENROLLMENT: 1,249

ACCREDITATION: PAIS, MSA-CESS

FRENCH INTERNATIONAL SCHOOL

Bala Cynwyd, PA

610-667-1284, frenchschoolphila.org

Day, co-ed, pre-K-grade 8

ENROLLMENT: 287

ACCREDITATION: MSA-CESS

FRIENDS SCHOOL HAVERFORD

FEATURED PROFILE

Haverford, PA

610-642-0354, friendshaverford.org

Day, coed, nursery-grade 8

ENROLLMENT: 100

ACCREDITATION: PAIS

FRIENDS SELECT SCHOOL

FEATURED PROFILE

Philadelphia

Day, coed, pre-K-grade 12

ENROLLMENT: 600

ACCREDITATION: PAIS

FRIENDS' CENTRAL SCHOOL

FEATURED PROFILE

Wynnewood, PA

610-649-7440, friendscentral.org

Day, coed, nursery-grade 12

ENROLLMENT: 750

ACCREDITATION: PAIS

GEORGE SCHOOL

FEATURED PROFILE

Newtown, PA

215-579-6547, georgeschool.org

Day/boarding, coed, grades 9-12

ENROLLMENT: 550

ACCREDITATION: PAIS, MSACS, MSA-CESS

GERMANTOWN ACADEMY

FEATURED PROFILE

Fort Washington, PA

215-646-3300, germantownacademy.net

Day, coed, pre-K-grade 12

ENROLLMENT: 1,171

ACCREDITATION: PAIS

GIRARD COLLEGE

Philadelphia

215-787-2600, girardcollege.edu

Day & Boarding, co-ed, grades 1-12

ENROLLMENT: 328

ACCREDITATION: MSACS

GLADWYNE MONTESSORI

Gladwyne, PA
610-649-1761, gladwyne.org
Day, coed, pre-K-grade 6
ENROLLMENT: 216
ACCREDITATION: PAIS

GREENE TOWNE MONTESSORI SCHOOL

FEATURED PROFILE

Philadelphia
215-563-6368, gtms.org
Day, coed, toddler-K
ENROLLMENT: 190
ACCREDITATION: PAIS

GWYNEDD-MERCY ACADEMY ELEMENTARY

Lower Gwynedd, PA
215-646-4916, gmaelem.org
Day, coed, K-grade 8
ENROLLMENT: 375
ACCREDITATION: NCEA, MSA-CESS

GWYNEDD MERCY ACADEMY HIGH SCHOOL

FEATURED PROFILE

Gwynedd Valley, PA
215-646-8815, gmahs.org
Day, girls, grades 9-12
ENROLLMENT: 375
ACCREDITATION: PAIS, MSACS, MSA-CESS

HADDONFIELD FRIENDS SCHOOL

Haddonfield, NJ
856-429-6786, haddonfieldfriends.org
Day, co-ed, grades pre-K-grade 8
ENROLLMENT: 144
ACCREDITATION: NJAIS, MSACS

HOLY CHILD ACADEMY

Drexel Hill, PA
610-259-2712, holychildacademy.com
Day, coed, pre-K-grade 9
ENROLLMENT: 132
ACCREDITATION: MSA- CESS

HOLY CHILD SCHOOL AT ROSEMONT

FEATURED PROFILE

Rosemont, PA
610-922-1010, holychildrosemont.org
Day, coed, pre-K-grade 8
ENROLLMENT: 315
ACCREDITATION: PAIS

JACK M. BARRACK HEBREW ACADEMY

FEATURED PROFILE

Bryn Mawr, PA
215-922-2350, jbha.org
Day, coed, grades 6-12
ENROLLMENT: 360
ACCREDITATION: PAIS

JOHN W. HALLAHAN

Philadelphia
215-563-8930, jwhallahan.com
Day, girls, grades 9-12
ENROLLMENT: 466
ACCREDITATION: MSA-CESS

LINDEN HALL SCHOOL

Lititz, PA
717-626-8512, lindenhall.org
Day/boarding, girls, grades 6-12
ENROLLMENT: 220
ACCREDITATION: PAIS, MSACS

MALVERN PREPARATORY SCHOOL

FEATURED PROFILE

Malvern, PA
484-326-3547, malvernprep.org
Day, boys, grades 6-12
ENROLLMENT: 630
ACCREDITATION: PAIS

MILTON HERSHEY SCHOOL

Hershey, PA
717-520-2074, mhskids.org
Boarding, coed, pre-K-12
ENROLLMENT: 2,020
ACCREDITATION: PAIS

MIQUON SCHOOL

Conschohocken, PA
610-868-1231, miquon.org
Day, coed, pre-K-grade 6
ENROLLMENT: 150
ACCREDITATION: PAIS

MONTGOMERY SCHOOL

FEATURED PROFILE

Chester Springs, PA
610-827-7222, montgomeryschool.org
Day, coed, pre-K-grade 8
ENROLLMENT: 230
ACCREDITATION: PAIS

MOORSETOWN FRIENDS SCHOOL

Moorsetown, NJ
856-235-2900, mfriends.org
Day, coed, pre-K-grade 12
ENROLLMENT: 696
ACCREDITATION: MSA-CESS

MOUNT SAINT JOSEPH ACADEMY

FEATURED PROFILE

Flourtown, PA
215-233-3177, msjacad.org
Day, girls, grades 9-12
ENROLLMENT: 498
ACCREDITATION: PAIS

NAZARETH ACADEMY HIGH SCHOOL

FEATURED PROFILE

Philadelphia
215-637-7676, nazarethacademyhs.org
Day, girls, grades 9-12
ENROLLMENT: 365
ACCREDITATION: MSACS

THE PHILADELPHIA SCHOOL

FEATURED PROFILE

Philadelphia
215-545-5323, tpschool.org
Day, coed, pre-K-grade 8
ENROLLMENT: 440
ACCREDITATION: PAIS

THE QUAKER SCHOOL AT HORSHAM

Horsham, PA
215-674-2875, quakerschool.org
Day, coed, grades 1-9
ENROLLMENT: 60
ACCREDITATION: PAIS

ROMAN CATHOLIC HIGH SCHOOL

Philadelphia
215-627-1270, romancatholichs.com
Day, boys, grades 9-12
ENROLLMENT: 953
ACCREDITATION: MSACS

SACRED HEART ACADEMY

Bryn Mawr, PA
610-527-3915, shabrynmawr.org
Day, girls, K-grade 12
ENROLLMENT: 239
ACCREDITATION: MSACS

SAINT BASIL ACADEMY

Jenkintown, PA
215-885-3771, stbasilacademy.org
Day, girls, grades 9-12
ENROLLMENT: 252
ACCREDITATION: MSACS

SALESIANUM SCHOOL

Wilmington, DE
302-654-2495, salesianum.org
Day, boys, grades 9-12
ENROLLMENT: 1,034
ACCREDITATION: NCEA, MSA-CESS

THE SCHOOL IN ROSE VALLEY

Rose Valley, PA
610-566-1088, theschoolinrosevalley.org
Day, coed, pre-K-6
ENROLLMENT: 126
ACCREDITATION: PAIS

THE SHIPLEY SCHOOL

FEATURED PROFILE

Bryn Mawr, PA
 610-525-4300, shipleyschool.org
 Day, coed, pre-K-grade 12
ENROLLMENT: 798
ACCREDITATION: PAIS

STRATFORD FRIENDS SCHOOL

FEATURED PROFILE

Newtown Square, PA
 610-355-9580, stratfordfriends.org
 Day, coed, K-grade 9
ENROLLMENT: 85
ACCREDITATION: PAIS, IMSLEC

WALDRON MERCY ACADEMY

FEATURED PROFILE

Merion Station, PA
 610-664-9847, waldronmercy.org
 Day, girls, pre-K-grade 8
ENROLLMENT: 410
ACCREDITATION: MSA-CESS

SOLEBURY SCHOOL

FEATURED PROFILE

New Hope, PA
 215-862-5261, solebury.org
 Day/boarding, coed, grades 9-12
ENROLLMENT: 225
ACCREDITATION: PAIS

THE TATNALL SCHOOL

FEATURED PROFILE

Wilmington, DE
 302-998-2292, tatnall.org
 Day, coed, pre-K-grade 12
ENROLLMENT: 525
ACCREDITATION: MSA-CESS

WESTTOWN SCHOOL

West Chester, PA
 610-399-7900, westtown.edu
 Day/boarding, coed, pre-K-12
ENROLLMENT: 732
ACCREDITATION: PAIS

ST. JOSEPH'S PREPARATORY SCHOOL

FEATURED PROFILE

Philadelphia
 215-978-1950, sjprep.org
 Day, boys, grades 9-12
ENROLLMENT: 900
ACCREDITATION: MSACS

TOWER HILL SCHOOL

Wilmington, DE
 302-575-0550, towerhill.org
 Day, coed, pre-K-12
ENROLLMENT: 722
ACCREDITATION: PAIS

WILMINGTON FRIENDS SCHOOL

Wilmington, DE
 302-576-2900, wilmingtonfriends.org
 Day, coed, pre-K-12
ENROLLMENT: 736
ACCREDITATION: MSACS

ST. PETER'S SCHOOL

FEATURED PROFILE

Philadelphia
 215-925-3963, st-peters-school.org
 Day, coed, pre-K-grade 8
ENROLLMENT: 198
ACCREDITATION: PAIS

THE WALDEN SCHOOL

FEATURED PROFILE

Media, PA
 610-892-8000, thewaldenschool.org
 Day, coed, pre-K-grade 8
ENROLLMENT: 130
ACCREDITATION: PAIS

WOODYNDE SCHOOL

Sirafford, PA
 610-687-9660, woodynde.org
 Day, coed, grades K-12
ENROLLMENT: 271
ACCREDITATION: PAIS

find it



PRIVATE SCHOOLS

What you need, when you need it.

Philly's resource to the best the city has to offer.

Philadelphia